

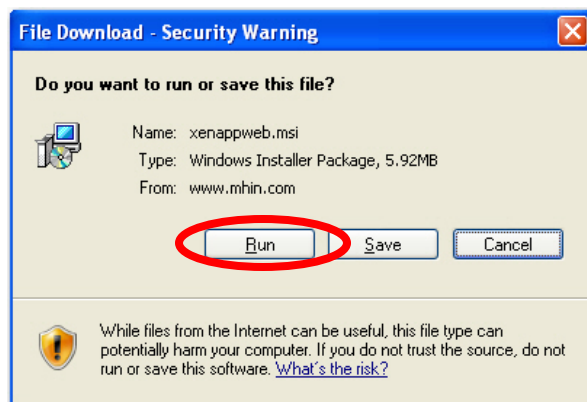
- Open **Internet Explorer** and type www.mhin.com in the address bar. Click the **Support** tab at the top of the screen.



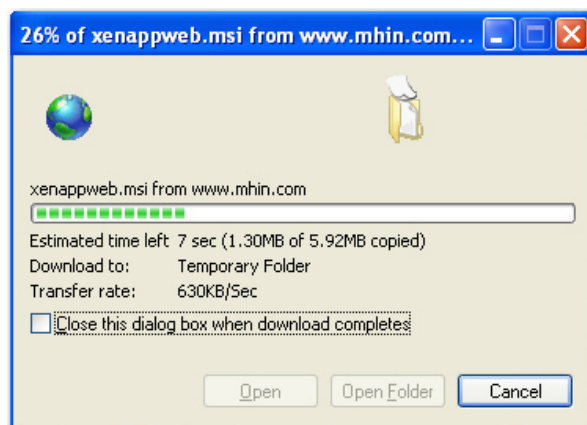
- Scroll to the **Downloads** section of the **Support** page. Click the **Windows ICA CLIENT** button.



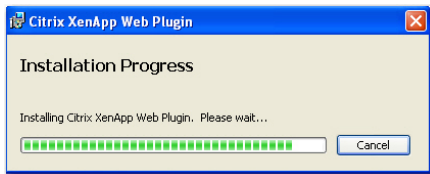
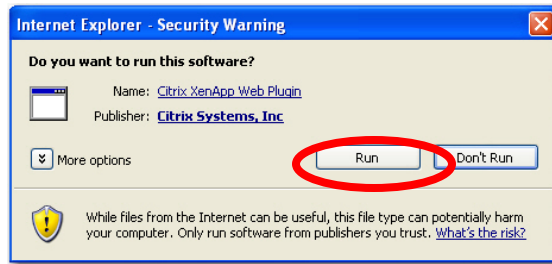
- The **File Download—Security Warning** Window will appear. Click **Run**.



- The program will download. This may take a few minutes.

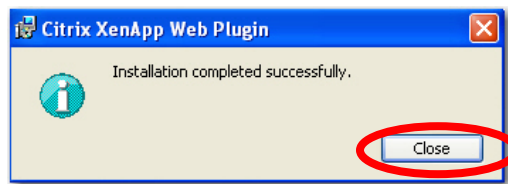


- The **Internet Explorer—Security Warning** Window will appear. Click **Run**.



- The **Citrix XenApp Web Plugin** Box will show that the program is Installing.

- When the **Installation** is finished. Click “Close” to continue.



- Click the **Home** button in the upper right corner. Enter the username and password given by MHIN. Click on the green arrow or press the **Enter** key after entering the login information.



****NOTE**** The Citrix username and password **may be different** from the Cerner username and password.

SUPPORT | FAQs | NEWS | EMPLOYMENT | CONTACT US



- After logging in on the MHIN website the **Applications** page will appear. Click on the desired application. This will launch the Cerner log in screen.



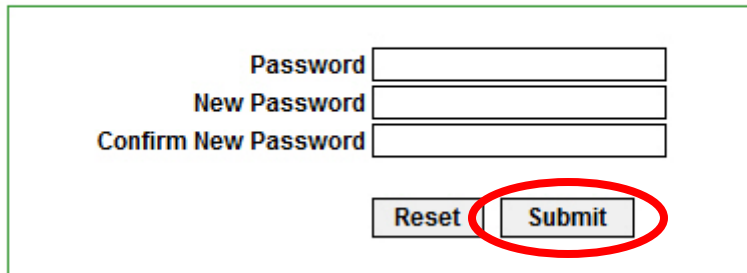
****NOTE**** If this is the first time have logging into the MHIN website, change your password by clicking the **Key Icon**:

APPLICATIONS



- The **Change Password** box will appear

CHANGE PASSWORD



A screenshot of the 'CHANGE PASSWORD' form. It contains three text input fields labeled 'Password', 'New Password', and 'Confirm New Password'. Below the fields are two buttons: 'Reset' and 'Submit'. The 'Submit' button is circled in red.

- Fill in the fields and click **Submit**.